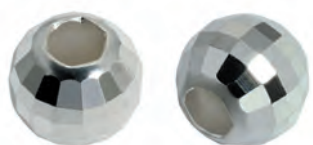


## ROUND CORRUGATED



ITEM CODE	SIZE (mm)	HOLE (mm)	WEIGHT/PC (gm)
IBRC/T2H2.2-05.0mm	5.00	2.20	<b>0.140</b>
IBRC/T2H2.4-06.0mm	6.00	2.40	<b>0.230</b>
IBRC/T2H2.4-06.0mmA	6.00	2.40	<b>0.273</b>
IBRC/T2H2.8-07.0mm	7.00	2.80	<b>0.525</b>
IBRC/T2H3.0-08.0mm	8.00	3.00	<b>0.684</b>
IBRC/T2H3.4-09.0mm	9.00	3.40	<b>0.931</b>
IBRC/T2H3.4-10.0mm	10.00	3.40	<b>1.174</b>
IBRC/T2H3.9-11.0mm	11.00	3.90	<b>1.854</b>

## ROUND DIAMOND CUT DISCO



ITEM CODE	SIZE (mm)	HOLE (mm)	WEIGHT/PC (gm)
IBRDD/3FT2H1.1-02.5mm	2.50	1.10	<b>0.026</b>
IBRDD/3FT2H1.2-03.0mm	3.00	1.20	<b>0.043</b>
IBRDD/3FT2H1.5-03.0mm	3.00	1.50	<b>0.038</b>
IBRDD/3FT2H1.5-04.0mm	4.00	1.50	<b>0.079</b>
IBRDD/3FT2H1.8-04.0mm	4.00	1.80	<b>0.075</b>
IBRDD/3FT2H2.2-05.0mm	5.00	2.20	<b>0.141</b>
IBRDD/5FT2H2.4-06.0mm	6.00	2.40	<b>0.177</b>
IBRDD/5FT2H5.0-10.0mm	10.00	5.00	<b>0.860</b>

## ROUND DIAMOND CUT FACETED PYRAMID



ITEM CODE	SIZE (mm)	HOLE (mm)	WEIGHT/PC (gm)
IBRDFP/T2H1.2-02.5mm	2.50	1.20	<b>0.027</b>
IBRDFP/T2H1.2-03.0mm	3.00	1.20	<b>0.041</b>
IBRDFP/T2H1.5-03.0mm	3.00	1.50	<b>0.041</b>
IBRDFP/T2H1.5-04.0mm	4.00	1.50	<b>0.087</b>
IBRDFP/T2H1.5-05.0mm	5.00	1.50	<b>0.170</b>
IBRDFP/T2H1.8-04.0mm	4.00	1.80	<b>0.087</b>
IBRDFP/T2H1.8-06.0mm	6.00	1.80	<b>0.320</b>
IBRDFP/T2H2.2-05.0mm	5.00	2.20	<b>0.170</b>
IBRDFP/T2H2.4-06.0mm	6.00	2.40	<b>0.320</b>

## ROUND DIAMOND CUT MULTI-CUT



ITEM CODE	SIZE (mm)	HOLE (mm)	WEIGHT/PC (gm)
IBRDM/T2H1.2-03.0mm	3.00	1.20	<b>0.043</b>
IBRDM/T2H1.5-03.0mm	3.00	1.50	<b>0.038</b>
IBRDM/T2H1.5-04.0mm	4.00	1.50	<b>0.079</b>
IBRDM/T2H1.5-05.0mm	5.00	1.50	<b>0.135</b>
IBRDM/T2H1.8-04.0mm	4.00	1.80	<b>0.075</b>
IBRDM/T2H2.2-05.0mm	5.00	2.20	<b>0.141</b>